

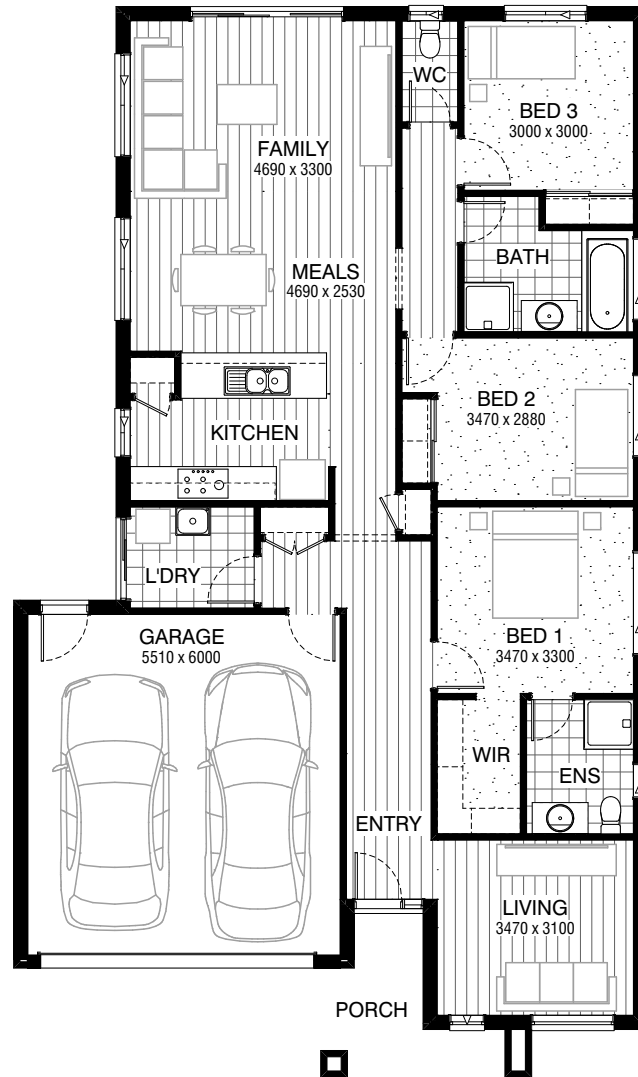


Total squares **19.3sq**

 **3**  **2**  **2**



FLOORPLAN OPTIONS

All available ready-to-go floorplan options for this design can be viewed on the following pages, or visit www.burbank.com.au.

Facades available:

Arkley, Drysdale, Haring	
Overall home width	11.15m
Overall home length	18.83m

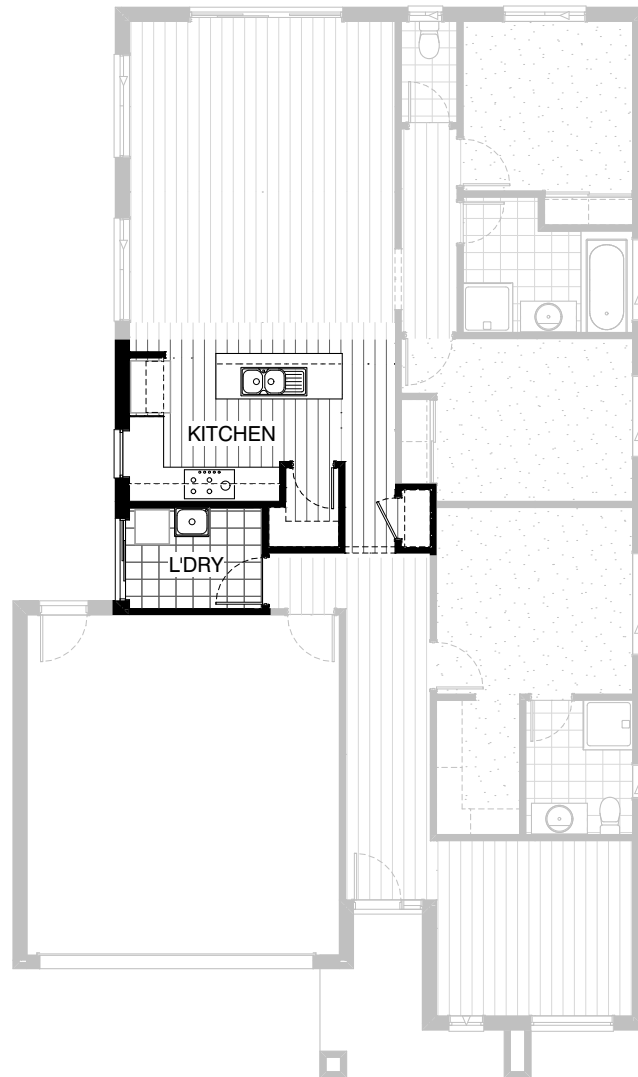
Residence	136.4m ²	14.7sq
Garage	36.5m ²	3.9sq
Porch	6.2m ²	0.7sq
Total	179.1m²	19.3sq

Listed details based on Drysdale facade floorplan (illustrated)

*Copyright conditions. All photos and illustrations are representative only. Floor plans and specifications may be varied by Burbank without notice, the dimensions are diagrammatic only and a Building Contract with final drawings will display correct dimensions and detail. All designs are the property of Burbank and must not be used, reproduced, copied or varied, wholly or in part without written permission from an authorised Burbank representative. Copyright Burbank Australia Pty Ltd. ABN 91 007 099 872. Builders Registration Number CDB-U-52603.

Call 13 BURBANK
Visit burbank.com.au

FLOORPLAN OPTIONS



**KITCHEN OPTION
STANDARD COLOUR BOARD**

- Provide Kitchen and W.I.P Option by increasing Laundry width by 160mm, delete Linen cupboard, 2no. 520mm flush panel hinged doors and 4no. shelves, reduce Laundry passage by 200mm and provide site build plaster lined WIP. with 4no. 300mm and 4no. 450mm deep shelves and 1no. 720mm flush panel hinged door.
- Decrease Kitchen opening / bulkhead width by 190mm to 900mm in lieu of standard 1090mm.
- Provide 1no. 300mm and 2no. 400mm and 1no. 800mm base cabinet, 1no. 450mm drawer unit, 1no. 800mm blind carcass with 1no. 350mm door, 1no. 700mm and 1no. 900mm overhead cabinets, 1no. laminated DW. provision, 1no. laminated open shelf above refrigerator space, 1no. 900mm underbench oven with 900mm gas cooktop & retractable rangehood above
- 1no. 1200mm x 850mm aluminium fixed window with additional tiled splashback and bench top to suit.
- Convert Broom cupboard into Linen cupboard with 4no. 450mm shelving, increase width by 200mm in line with W.I.P wall, add 2no. shelves and provide 720mm hinged door i.l.o. 620mm door.
- Option contains standard specification

FLOORPLAN OPTIONS



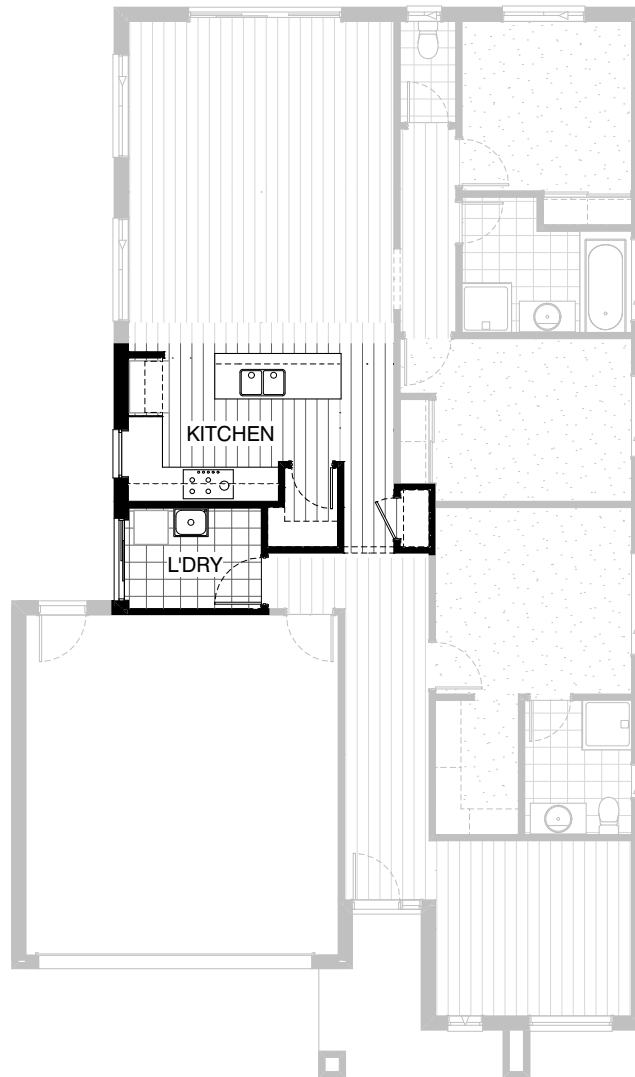
3



2



2



**KITCHEN OPTION
UPGRADE COLOUR BOARD**

Provide Kitchen and W.I.P Option by increasing Laundry width by 160mm, delete Linen cupboard, 2no. 520mm flush panel hinged doors and 4no. shelves, reduce Laundry passage by 200mm and provide site build plaster lined W.I.P. with 4no. 300mm and 4no. 450mm deep shelves and 1no. 720mm flush panel hinged door.




Decrease Kitchen opening / bulkhead width by 190mm to 900mm in lieu of standard 1090mm.

Provide 1no. 300mm and 2no. 400mm and 1no. 800mm base cabinet, 1no. 450mm drawer unit, 1no. 800mm blind carcass with 1no. 350mm door, 1no. 700mm and 1no. 900mm overhead cabinets,

1no. laminated DW. provision, 1no. laminated open shelf above refrigerator space, 1no. 900mm underbench oven with 900mm gas cooktop & retractable rangehood above 1no. 1200mm x 850mm aluminium fixed window with additional tiled splashback and bench top to suit.

Convert Broom cupboard into Linen cupboard with 4no. 450mm shelving, increase width by 200mm in line with W.I.P wall, add 2no. shelves and provide 720mm hinged door i.l.o. 620mm door. Option provides upgrade specification

FLOORPLAN OPTIONS

 **3**  **2**  **2**



LAUNDRY OPTION
STANDARD COLOUR BOARD

Provide Laundry Upgrade with
s.s. inset trough in bench top.
1no. 450mm and 1no. 900mm base cabinets,
1no. 450mm and 1no. 900mm overhead cabinets
and additional tiled splashback and bench top to suit.
Option contains standard specification

FLOORPLAN OPTIONS



**LAUNDRY OPTION
UPGRADE COLOUR BOARD**

Provide Laundry Upgrade with
s.s. inset trough in bench top.
1no. 450mm and 1no. 900mm base cabinets,
1no. 450mm and 1no. 900mm overhead cabinets
and additional tiled splashback and bench top to suit.
Option contains upgraded specification

FLOORPLAN OPTIONS



**ENSUITE OPTION
STANDARD COLOUR BOARD**

Provide Ensuite Option with
1no. 1200mm x 900mm polymarble shower base ILO standard.
1no. 1582mm wide vanity unit with 2no. basins ILO standard,
Increase Ensuite width by 300mm and decrease W.I.R width by 100mm,
Decrease Entry width by 200mm.
Provide 720mm cavity sliding door off W.I.R in lieu of 720mm hinged door.
Option contains standard specification

FLOORPLAN OPTIONS



**ENSUITE OPTION
UPGRADE COLOUR BOARD**

- Provide Ensuite Option with
- 1no. 1200mm x 900mm tiled shower base ILO standard, with 300mm high x 600mm wide tiled niche.
 - 1no. 1582mm wide vanity unit with 2no. basins ILO standard,
 - Increase Ensuite width by 300mm and decrease W.I.R width by 100mm,
 - Decrease Entry width by 200mm.
 - Provide 720mm cavity sliding door off W.I.R in lieu of 720mm hinged door.
 - Option contains upgraded specification

FLOORPLAN OPTIONS



ALFRESCO OPTION

Provide Alfresco to rear of Family with tiled hip roof, structural concrete floor, light point and 2no. 470mm x 470mm brick piers.

Option contains standard specification

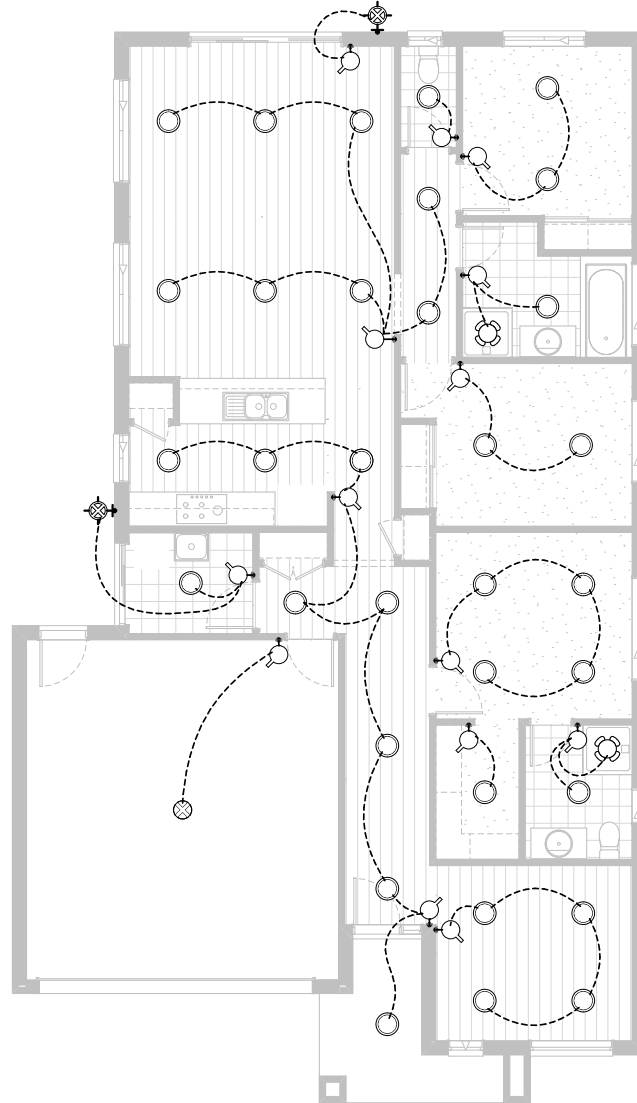
Option contains standard lighting - NOTE: This option cannot be selected with ELE-1

Increases area by 14.40m².

Increase length by 3240mm.

Overall width is 4430mm.

FLOORPLAN OPTIONS



Option ELE-1

Provide LED lighting upgrade